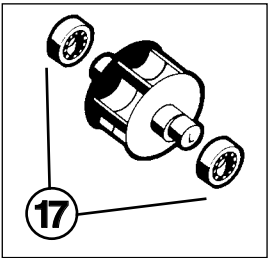
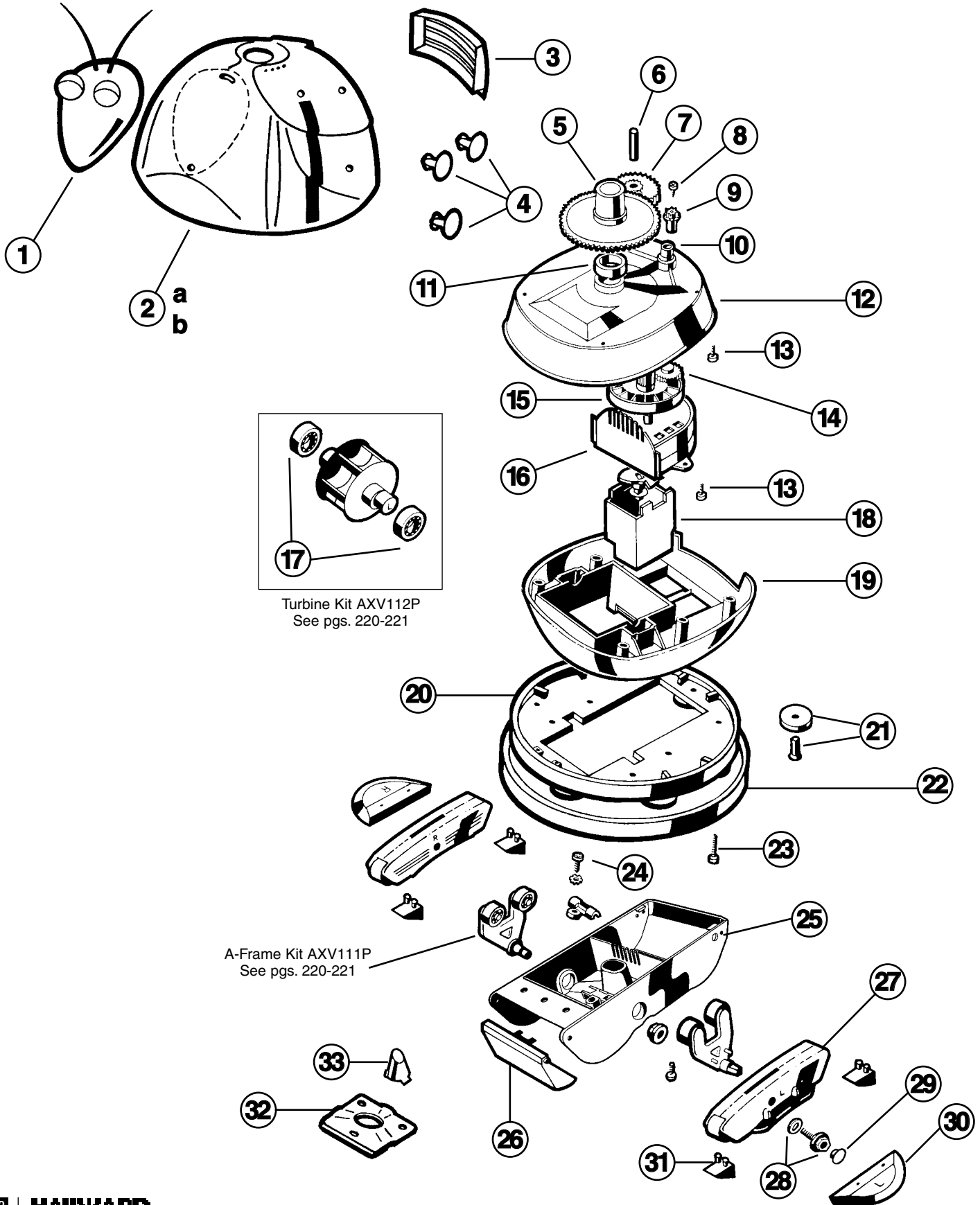




Parts Diagram



Turbine Kit AXV112P
See pgs. 220-221

A-Frame Kit AXV111P
See pgs. 220-221

Cleaners

Parts Listing

| Ref. No. | Part No. | Description | Ctn Qty. | No. Req'd |
|----------|-----------|---|----------|-----------|
| 1 | AXV464 | Head Assembly, includes Head, Eyes & Antennae | 10 | 1 |
| 2a | AXV457OR | Shell, Orange | * | 1 |
| 2b | AXV457YL | Shell, Yellow | * | 1 |
| 3 | AXV513BK | AquaBug Screen, Black | 10 | 1 |
| 4 | AXV443 | AquaBug Spots, 4 lg. & 2 sm. | 10 | 1 |
| 5 | AXV070 | Cone Gear | * | 1 |
| 6 | AXV309 | Intermediate Gear Shaft | * | 1 |
| 7 | AXV301 | Intermediate Gear | 25 | 1 |
| 8 | AXV068 | Spindle Gear Screw | * | 1 |
| 9 | AXV303 | Spindle Gear | 25 | 1 |
| 10 | AXV066A | Spindle Gear Bushing | 25 | 1 |
| 11 | AXV306 | Cone Gear Bushing | 50 | 1 |
| 12 | AXV060WH | Upper Middle Body | * | 1 |
| 13 | AXV065P | Lower/Upper Body Screw (6 pack) | * | 1 |
| 14 | AXV064A | Medium Turbine Drive Gear | 25 | 1 |
| 15 | AXV062C | Medium Turbine | 25 | 1 |
| 16 | AXV009 | Medium Turbine Case w/Axle | 25 | 1 |
| 17 | AXV055P | Turbine Bearings (2) | 50 | 1 |
| 18 | AXV518P | Gear Box | 10 | 1 |
| 19 | AXV050CWH | Lower Middle Body | * | 1 |
| 20 | AXV525 | Base Plate Assembly | 5 | 1 |
| 21 | AXV551P | Wheel Kit (6 wheels, axles) | 25 | 1 |
| 22 | AXV458 | AquaBug Ring | 5 | 1 |
| 23 | AXV057P | Middle Body Screw (6 pack) | * | 1 |
| 24 | AXV313 | Lower Body Screw | * | 1 |
| 25 | AXV030A | Lower Body (fixed throat) | 10 | 1 |
| 26 | AXV442 | Flap Kit, white(2 flaps, front & rear) | 25 | 1 |
| 27 | AXV417WHP | Pod Kit | 25 | 1 |
| 28 | AXV015P | Pod Screw Kit (2 hex head screws & 2 washers) | 50 | 1 |
| 29 | AXV016P | Pod Plug (6 pack) | 50 | 1 |
| 30 | AXV552WHP | Wing Kit, White | 50 | 1 |
| 31 | AXV014SP | Slotted Santoprene Shoes (4 pack) | 50 | 1 |
| 32 | AXV304A | Bottom Plate | 25 | 1 |
| 33 | AXV512A | Nozzle | * | 1 |

*Special order.